

# TAKE CARE FROM 1 MARCH TO 31 AUGUST

## Local interests are working together to help the specially protected birds breeding in this area

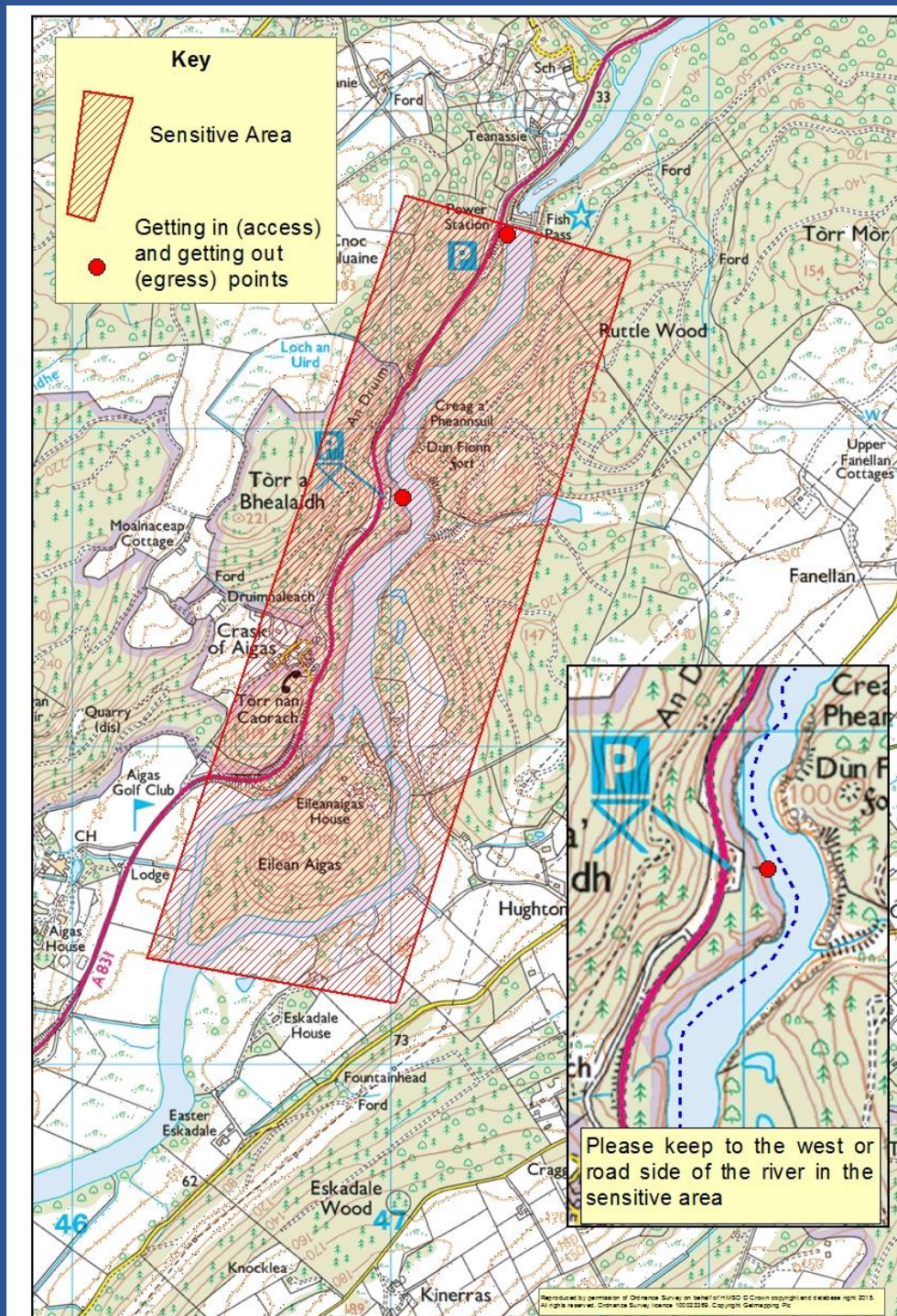
### Important information about local wildlife and how YOU can help us protect it

- This area is sensitive. It is very special for wildlife and it is used by rare and protected birds such as osprey, peregrine falcon and red kite.
- **If possible please use another paddling location between 1 March and 15 May when these birds are settling onto their nest sites.**

Other great nearby locations include:  
Cannich to Mauld Bridge  
Loch Beinn a Mheadhoin  
Loch Mullardoch

- The birds and their young chicks are still very sensitive to disturbance up to 15 June. Please be careful not to disturb them if you choose to use the river during this time.
- Do not fly drones here.
- **Remember it is illegal to intentionally or recklessly disturb these birds whilst nesting during the breeding season which is 1 March to 31 August. This covers the period of time when the birds are building their nests, have eggs or are looking after dependent young**

LOGOS TO ADD HERE



### Following this Code of Conduct will help to ensure that you can enjoy the gorge without disturbing the precious wildlife and delicate ecosystem

- Stay quiet whilst travelling through the gorge and keep group sizes small.
- Do not linger in the gorge, keep moving.
- Keep to the west (or road) side of the gorge in the sensitive area between the island and the dam.
- Do not light fires on the beach at Eilean Aigas.
- Park responsibly – respect the interests of others, do not block entrances or obstruct access.
- Take away all your litter.
- “Go” before you go. The nearest public toilets are in Beaulay (6 miles) and Cannich Hall (12 miles - Closed in winter).
- **Inflatable Paddle boarders and craft. Please inflate and deflate your boards away from the river e.g. in the car park.**
- If the car park is busy please consider visiting another day.

